

- Excelon design allows in-line or modular installation
- Full flow gauge ports
- Balanced valve design for optimum pressure control
- Push to lock adjusting knob with tamper resistant accessory
- R72R reverse flow option
- Modular installations with Excelon 72, 73, and 74 series can be made to suit particular applications



**Ordering Information.** Models listed include unidirectional flow, PTF threads, knob adjustment, relieving diaphragm, 5 to 150 psig (0.3 to 10 bar) outlet pressure adjustment range\* with gauge.

Port Size	Model	Flow <sup>†</sup> scfm (dm <sup>3</sup> /s)	Weight lb (kg)
1/4"	R72G-2AK-RMG	70 (33)	0.79 (0.36)
3/8"	R72G-3AK-RMG	70 (33)	0.79 (0.36)

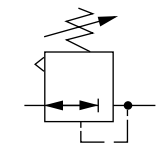
† Typical flow with 150 psig (10 bar) inlet pressure, 90 psig (6.3 bar) set pressure and a 15 psig (1 bar) droop from set.

### Alternative Models

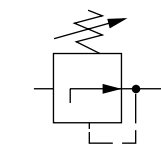
		R 7 2 ★ - ★ ★ ★ - ★ ★ ★				
Flow Type	Substitute				Gauge	Substitute
Standard	G				With	G
Reverse flow	R				Without	N
Port Size	Substitute				Outlet Pressure Adjustment Range*	Substitute
1/4"	2				5 to 30 psig (0.3 to 2 bar)	C
3/8"	3				5 to 60 psig (0.3 to 4 bar)	F
					5 to 150 psig (0.3 to 10 bar)	M
Threads	Substitute				Diaphragm	Substitute
PTF	A				Relieving	R
ISO Rc taper	B		Non relieving	N		
ISO G parallel	G					
					Adjustment	Substitute
					Knob	K
					T-bar	T

\* Outlet pressure can be adjusted to pressures in excess of, and less than, those specified. Do not use these units to control pressures outside of the specified ranges.

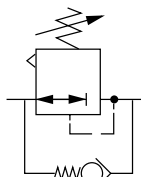
### ISO Symbols



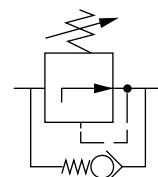
R72G Relieving



R72G Non Relieving



R72R Relieving



R72R Non Relieving

**See Section ALE-25 for Accessories**



## Technical Data

Fluid: Compressed air

Maximum pressure: 300 psig (20 bar)

Operating temperature\*: -30° to 150°F (-34° to 65°C)

\* Air supply must be dry enough to avoid ice formation at temperatures below 35°F (2°C).

Approximate flow at 150 psig (10 bar) inlet pressure, 90 psig (6.3 bar) set pressure and a droop of 15 psig (1 bar) from set: 70 scfm (33 dm<sup>3</sup>/s)

Gauge ports:

1/8" PTF with PTF main ports

1/8" ISO Rc with ISO Rc main ports

1/8" ISO Rc with ISO G main ports

Materials:

Body: Zinc

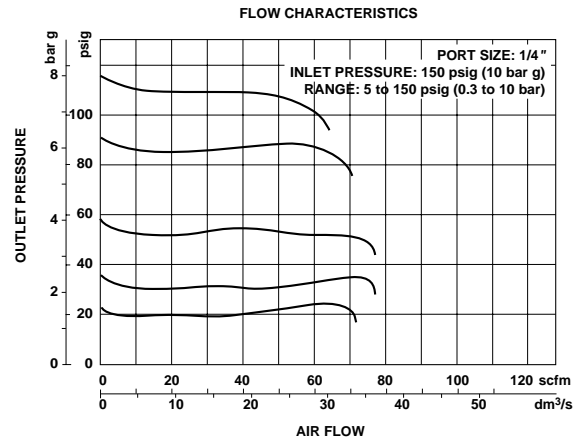
Bonnet: Acetal

Valve: Brass

Elastomers: Nitrile

Bottom plug: Acetal

## Typical Performance Characteristics



## Service Kits

Item	Type	Part Number
Service kit	Relieving	4381-500
	Non relieving	4381-501

Service kit includes diaphragm assembly, valve assembly, valve spring and o-rings.

All Dimensions in Inches (mm)

Panel mounting hole diameter: 1.57" (40 mm)

Maximum panel thickness: 0.16" (4 mm)

